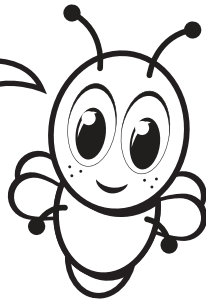


Blinky's Family Challenge

I'll show super-de-dooper faith in God by ... *choosing to love and being kind!*



Faith or Fool

When we're kind and loving to leaders, we show faith in God. When we disobey and act yucky, our faith in God doesn't show. We look like a fool, instead!

Directions

1. Say a choice from the **Faith or Fool List**.
2. If it's kind and loving, hug yourself and everyone else, and say, "Faith!"
3. If it's disobedient or yucky, fall over, roll around, and say, "Fool!"

Faith or Fool List

- Obey right away
- Yell, "No!" when I need to obey.
- Throw a fit
- Listen
- Pray to God

Review Time!

Say With Me *Ages 2-3*

1. *Say Together:* **I have faith!**
2. *Say Together:* **Obey leaders!**

Q&A *Ages 4-Kindergarten*

1. **Name some actions that show faith.** See **Faith or Fool list** for ideas.
2. **What is a fool?** *Someone who makes wrong choices; someone who doesn't show faith in God*



Lead your family through the Bible Plan *Abraham's Big Test* on the YouVersion Bible App.
www.bible.com

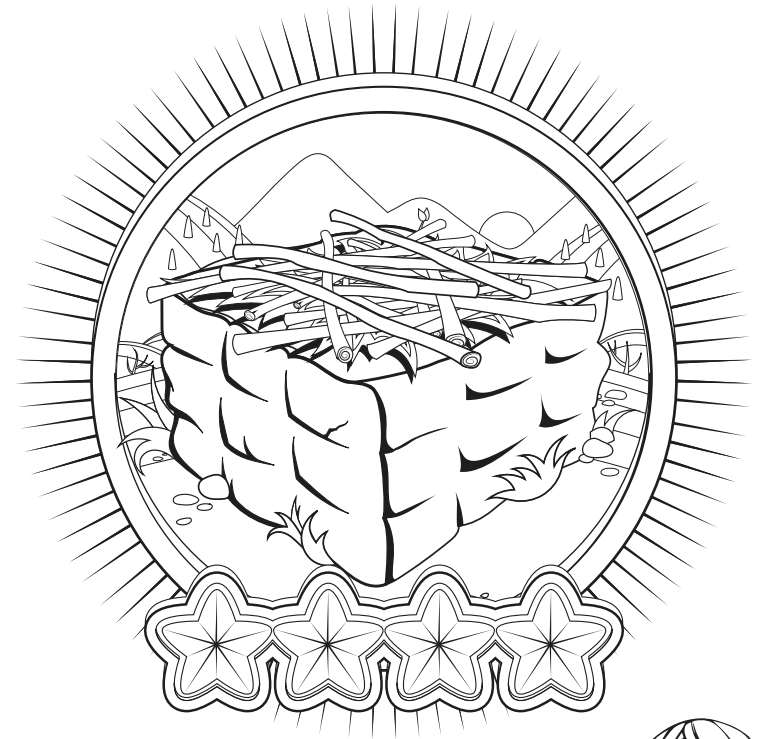


www.life.church/kids

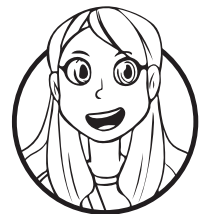
Abraham's Big Test

Abraham and Isaac

Week Four



Tell your family what's in my Adventure Bag!



Emily

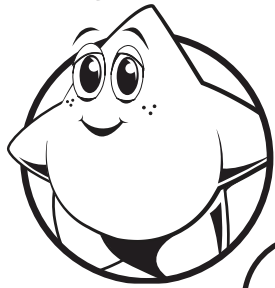


Interact with God's Word through the Bible App for Kids, activities, videos, coloring sheets, parent resources, and more!
www.BibleAppForKids.com



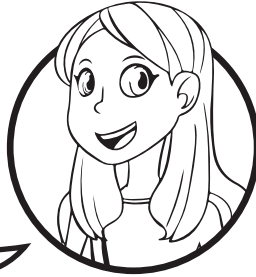
Follow LifeKids to sing along with this month's song, *F-F-F-Faith*. www.life.church/kidsmusic

Shine



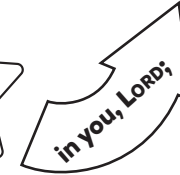
Question: Hey friends! **How do you show faith?**

Emily



Answer: Say it with me! **I show faith every day when I trust and obey.**

Say the Bible verse with me!



I can wait patiently, even if it takes a long time.

Put a sticker on the clock!

