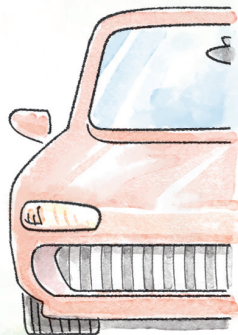
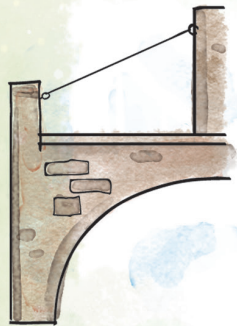


Half and Half

DOWNLOAD THE
TGP FAMILY APP

INSTRUCTIONS: Complete each picture by drawing the missing half.



KEY PASSAGE: Galatians 2:20

BIG PICTURE QUESTION:

- Why does God want us to obey Him? Obedience is our response to God's love for us.

BIBLE STORY:

THE CHURCH WAS DIVIDED

- Paul wrote a letter to the Corinthians.
- The Corinthians were fighting about whom to follow.
- Paul wrote that Christians are joined together by faith in Jesus.

FAMILY DISCUSSION STARTERS:

- Why do you think it is important for Christians to be united?
- Whom should Christians follow? Why?

FAMILY ACTIVITY:

- Cut some objects, like a baseball, an insulated mug, or a seashell in half. Show your kids what these objects look like on the inside. Discuss how, despite being cool to look at, each object cannot function when divided. Discuss ways the church benefits from being united by faith in Christ.

Younger Kids Activity Pages
Unit 31, Session 2

